

Preserve Tile

Product Type	Carpet Tile
Collection	Canopy
Style Number	5T423
Construction	Multi-Level Pattern Loop
Fiber	Ecosolution Q100™ Nylon
Dye Method	100% Solution Dyed
Primary Backing	Synthetic
Secondary Backing	Ecoworx® Tile
Protective Treatments	SSP® Shaw Soil Protection
Recommended Adhesive	LokDots, 3000 Carpet Tile 1 Gallon, 4151 Multi-Use Carpet Tile 4 Gallon, 5000 Carpet Tile 1 Gallon, LokWorx Adhesive Tabs, 3800 Indoor Outdoor Carpet Tile 4 Gallon, 5000 Carpet Tile 4 Gallon or 3000 Carpet Tile 4 Gallon

	u.s.	metric
Product Size	9 in x 36 in	23 cm x 91 cm
Area Per Carton	45 ft²	4.18 m²
Pieces Per Carton	20 pcs	
Gauge	1/10 in	39.4 per 10 cm
Stitches	8.0 per in	31.5 per 10 cm
Average Density	7927 oz/yd³	0.293 g/cm³
Total Thickness	0.297 in	7.54 mm
Tufted Weight	24 oz/yd²	813.7 g/m²



Recommended Installation Method



Data + Testing

Radiant Panel	Class I
Nbs Smoke	Less Than 450
Electrostatic Propensity	Less Than 3.5 kv
Cri Green Label Plus (Glp)	GLP9968
Pill Test	Pass*
Ada Compliance	>0.6, Meets the recommended static coefficient of friction for ADA walking surfaces and accessible routes***

Test Reports may be included or listed by the manufacturing/inventory style number as opposed to the noted selling style number.

Coordinating Products

Carpet Tile: **Elevate Tile, Balcony Tile, Habitat Tile, Suspend Tile, Above Tile, Weathered Tile, Wildwood Tile, Weathered Color Tile**
Broadloom: **Ground, Below**

Material Health & Environmental Certifications

Certifications Below Apply Exclusively To The Carpet Tile Rug Itself And Not The Lokworx Tabs Adhesive

Health & Wellbeing

Material Ingredient Transparency	Cradle to Cradle Certified® Silver Level (Version 4.0) Health Product Declaration (HPD) 1,000 ppm Disclosure Living Building Challenge (LBC) Free of Red List Chemicals Declare LBC Compliant NSF 140 Gold CRI Green Label Plus (GLP) GLP9968
Indoor Air Quality	

Climate Impact

Environmental Product Declaration (EPD)	3rd Party Certified in Accordance with ISO14044, ISO14025 & EN15804
Embodied Carbon (Cradle to Gate)	4.98 kg CO₂/m²
Life-Cycle Carbon Emissions	Carbon Neutral
Total Recycled Content	61% (Pre-Consumer 61% Post-Consumer 0%)
Product Packaging	100% Recyclable

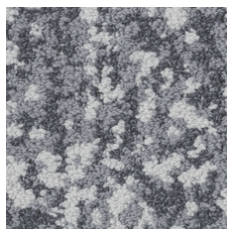
Global Product Assessment

Singapore Green Label | Certified
CE Marking (EN 14041) | 3rd Party Certified
Environmental Guarantee* | Re[turn] Reclamation Program* | Through Our Environmental Guarantee, Shaw Pledges to Transport And Recycle Any Ecoworx Carpet.
Country of Origin | USA**

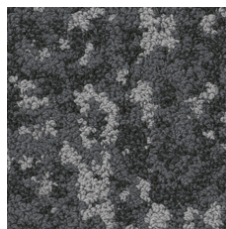
Green Leed Contribution Credit

MR Credit: Building Product Disclosure and Optimization Environmental Product Declarations - Option 1: Environmental Product Declaration (EPD)	3rd Party Certified in Accordance with ISO14044, ISO14025 & EN15804
MR Credit: Building Product Disclosure and Optimization Material Ingredients - Option 1: Material Ingredient Reporting	C2C Silver Level (Version 4.0) or HPD (Version 2.1)
MR Credit: Building Product Disclosure and Optimization Material Ingredients - Option 2: Material Ingredient Optimization	C2C Silver Level (Version 4.0)
MR Credit: Building Product Disclosure and Optimization Sourcing of Raw Materials - Option 2: Leadership Extraction Practices	Environmental Guarantee: Re[turn] Reclamation Program* Through Our Environmental Guarantee, Shaw Pledges to Transport And Recycle Any Ecoworx Carpet. Green Label Plus Certification: GLP9968
EQ Credit: Low Emitting Materials Option 1: Product Category Calculations	
MR Credit: Interiors Life-Cycle Impact Reduction Option 3: Design for Flexibility	Ecoworx Tile with Lokdots Installation System

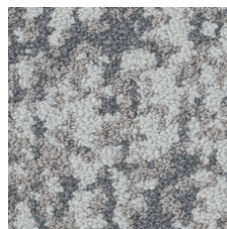
Available Colorways



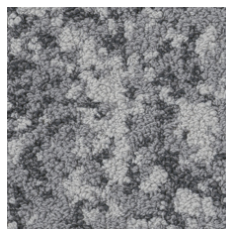
Still 88481



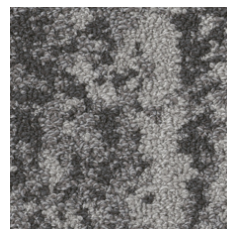
Shadow 88500



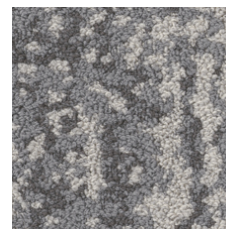
Quiet 88535



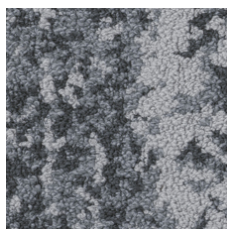
Path 88555



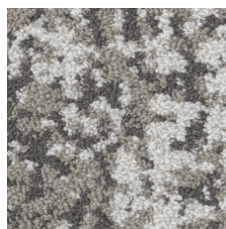
Shade 88557



Calm 88595



Filter 88596



Branch 88760

Additional Information

* To learn more about the recyclability of our products and our re[TURN], please visit shawcontract.com/sustainability.

**Meets or exceeds all local and national regulations in country of manufacture.

***This carpet is manufactured to be ADA compliant, but to be fully ADA compliant, the end-user must ensure the carpet is adhered to the floor and installed as outlined in the ADA standards.

[Installation Guidelines](#)

[Maintenance Guidelines](#)

Specifications are subject to nominal manufacturing variance. Material supply and/or manufacturing processes may necessitate changes without notice.

This product is an exclusive design and may not be duplicated in any manner. Use of this design in the creation of another product design is also strictly prohibited.

Visit shawcontract.com/testing for more information.



PVC-Free

Corporate Headquarters +1 800 257 7429 | +1 706 532 7984 | Atlanta +1 404 853 7429 | Bengaluru +91 80 6773 0202 | Beijing +86 10 6568 588 | Chicago +1 312 467 1331 | Dubai +971 4 584 6956 | Hong Kong +852 2623 0371 | Latin America (Miami) +1 305 827 5912 | London +44 207 961 4120 | Los Angeles +1 800 233 1614 | Melbourne +61 3 9939 8543 | Mexico City +55 5010 7600 | Mumbai +91 22 6284 5050 | Nantong +86 400 800 7429 | New York +1 212 953 7429 | Paris +33 (0) 1 81 22 44 39 | San Francisco +1 415 955 1920 | Santiago +562 2431 5000 x 550 | São Paulo +55 11 3071 1702 | Shanghai +86 21 3338 4000 | Singapore +65 6733 1811 | Sydney +1 800 556 302